

fresh Insight

the simple refreshing way to understand business content

Submit Data via SkyDrive



Herewith suggested steps to submit data to freshInsight via SkyDrive:

1. Create SkyDrive Folder
2. Upload your data into SkyDrive folder
3. Share SkyDrive Folder
4. Use Link to indicate to freshInsight where the data resides

The following pages contains details for each step.

1. Create SkyDrive Folder to share source data



Microsoft account What's this?

 Keep me signed in

Can't access your account?
Sign in with a single-use code

Don't have a Microsoft account? [Sign up now](#)

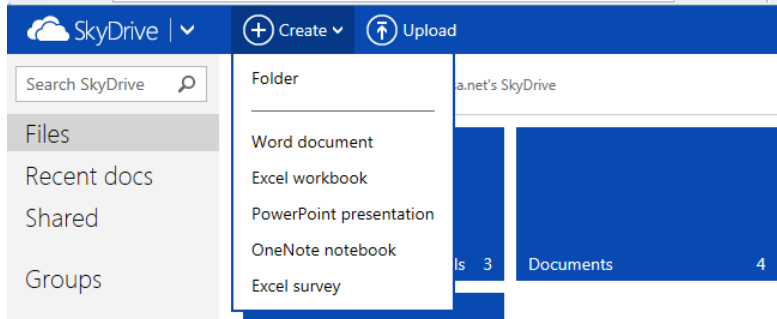
1. Sign-In

If you are an existing SkyDrive User please sign-in to your account, otherwise register to get SkyDrive account and then sign-in.

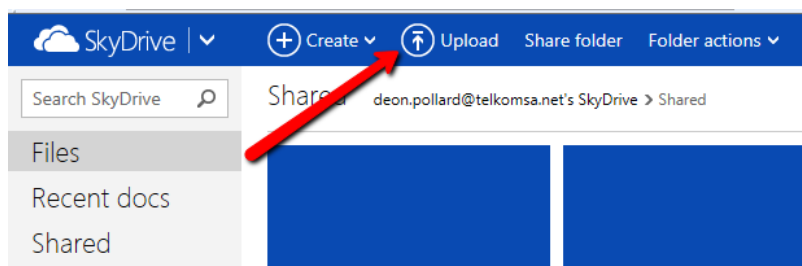
<http://www.skydrive.com>

2. Create Folder

Click on Create Folder and give it meaningful name



2. Upload source data



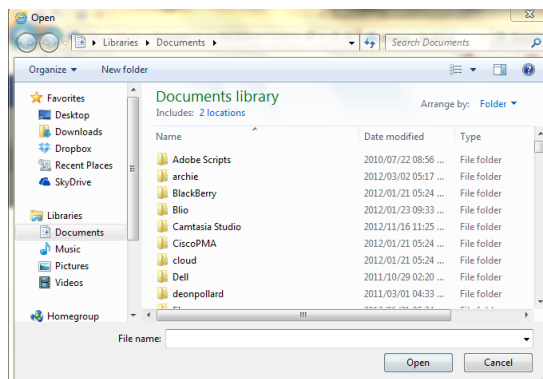
1. Upload

Click upload and start uploading the PowerPoint Files you want to analyse

Upload

Drop files here or [select them from your computer.](#)

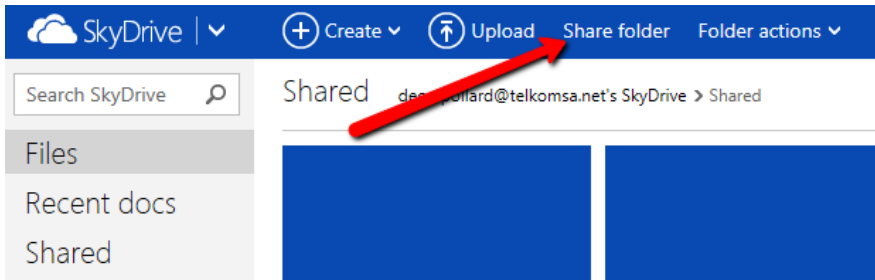
Close



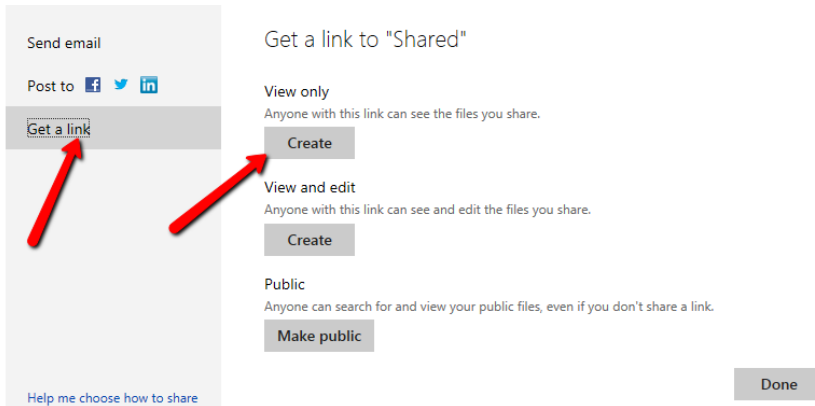
You can do this by selecting them from your computer.

Once all files you want to use for the freshInsight Project is uploaded you can proceed to share the folder.

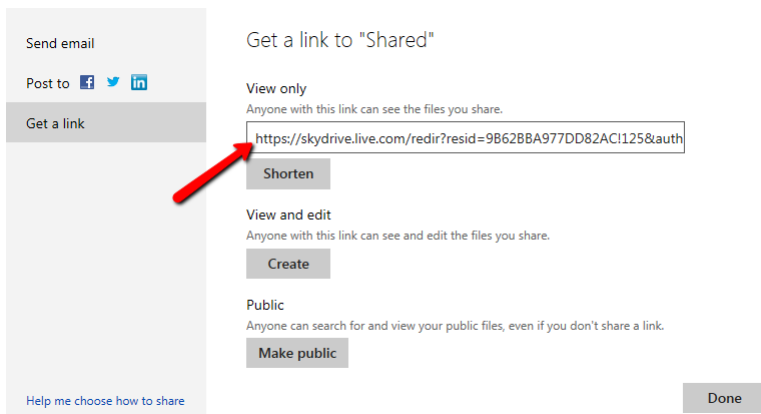
3. Share Folder



1. Share Folder
Click Share Folder



2. Create a Link
Click Get a Link and then Create View Only



3. Use the Link
Provide freshInsight with this link

5. Use Link



1. Use link

Copy & paste SkyDrive Link and click on Proceed, therefore freshInsight knows where to source data from

The screenshot shows the freshInsight web interface. At the top, there is a teal header with the 'freshinsight' logo on the left and 'homepage' and 'deonpollard' on the right. Below the header, the main content area is divided into three columns. The left column is titled 'get the data!' and contains the text: 'a New freshInsight Project requires you to supply the source data from which the analysis will be done. You can do that using a number of options:'. Below this text are three options: 'Shared Link', 'Using a Harvesting program', and 'Using Removable media'. The middle column is titled 'nuwe toetsie 2' and contains the text: 'How do you want to supply data to the Project?'. Below this text are three buttons: 'Shared Link' (highlighted in green), 'Program', and 'Removable Media'. Below the buttons is a text input field with the placeholder text: 'If you're choice is Shared Link, please supply URL'. A black arrow points to this input field. Below the input field is the text: 'Once you have sourced the data, click on Proceed' and a blue button labeled 'Proceed with Analysis'. Below the button is the text: 'Click of button will give error for now, have not coded handler yet'. The right column is titled 'status of project' and contains the text: 'Progress to Date' and a progress bar.